



Department of Public Works  
**Engineering Division**  
Robert F. Phillips, P.E., City Engineer

City-County Building, Room 115  
210 Martin Luther King, Jr. Boulevard  
Madison, Wisconsin 53703  
Phone: (608) 266-4751  
Fax: (608) 264-9275  
[engineering@cityofmadison.com](mailto:engineering@cityofmadison.com)  
[www.cityofmadison.com/engineering](http://www.cityofmadison.com/engineering)

**Assistant City Engineer**  
Michael R. Dailey, P.E.

**Principal Engineer 2**  
Gregory T. Fries, P.E.  
Christopher J. Petykowski, P.E.

**Principal Engineer 1**  
Christina M. Bachmann, P.E.  
Eric L. Dundee, P.E.  
John S. Fahrney, P.E.

**Facilities & Sustainability**  
Jeanne E. Hoffman, Manager

**Operations Manager**  
Kathleen M. Cryan

**Mapping Section Manager**  
Eric T. Pederson, P.S.

**Financial Manager**  
Steven B. Danner-Rivers

June 30, 2017

**NOTICE OF ADDENDUM  
ADDENDUM NO. 1  
CONTRACT NO. 7848**

**WEST WILSON STREET AND SOUTH HENRY STREET ASSESSEMENT DISTRICT – 2017 &  
SOUTH HAMILTON STREET RESURFACING ASSESSMENT DISTRICT - 2017**

Revise and amend the contract document(s) for the above project as stated in this addendum, otherwise, the original document shall remain in effect.

**INFORMATIONAL ITEM:**

A plan showing MG&E's approximate trench route for the work around S. Henry St. has been posted. This plan is preliminary and approximate and is subject to change; the plan is not for construction.

**SPECIAL PROVISIONS:**

**ADD TO SECTION 104.4 INCREASED OR DECREASED QUANTITIES**

Depending on the results of the investigations for the installation of the tree grates (included with the tree grate bid item), the quantities of tree grates installed may be reduced. No additional compensation will be provided if the quantity of tree grates installed is reduced and the investigative work shall be considered incidental the project.

**ADD TO SECTION 104.4 INCREASED OR DECREASED QUANTITIES**

Under Coordination with Utilities and B-Cycle:

MG&E's work on S. Henry and into the intersection of Wilson/Henry/Hamilton includes approximately 3 weeks of trenching work and 3 weeks of wiring work and equipment placement to convert the overhead lines to underground.

**REVISE BID ITEM 50801 – UTILITY LINE OPENING (ULO)**

REMOVE: Utility Line Openings are to be completed on or prior to September 22, 2018.

REPLACE WITH: Utility Line Openings are to be completed on or prior to September 22, 2017.

**PROPOSAL:**

Several items have been revised, added or removed. A summary of the changes to the proposal are as follows:

Action	Bid Item	Description	Original Quantity	New Quantity
REVISE	60230	FURNISH & INSTALL 2 INCH PVC (SCHEDULE 80) CONDUIT	1315 L.F.	1390 L.F.
REVISE	60232	FURNISH & INSTALL 2 INCH PVC (SCHEDULE 40) CONDUIT	1625 L.F.	1775 L.F.
ADD	60414	BASE FOR MULTISPACE PARKING METER	0 EACH	2 EACH
REVISE	60702	CONSTRUCT ELECTRICAL HANDHOLE TYPE 1	10 EACH	11 EACH
ADD	70006	FURNISH AND INSTALL 16 INCH PIPE & FITTINGS	0 L.F.	40 L.F.
REVISE	70080	CUT-IN OR CONNECT TO EXISTING WATER SYSTEM	6 EACH	7 EACH

**PLAN SET:**

REMOVE sheets E-1, E-2 & E-4

INSERT sheets E-1, E-2 & E-4 (Revised 6-30-17)

Please acknowledge this addendum on page E1 of the contract documents and/or in Section E: Bidder's Acknowledgement on Bid Express.

Electronic version of these documents can be found on the Bid Express web site at:

<http://www.bidexpress.com>

If you are unable to download plan revisions associated with the addendum, please contact the Engineering office at 608-266-4751 receive the material by another route.



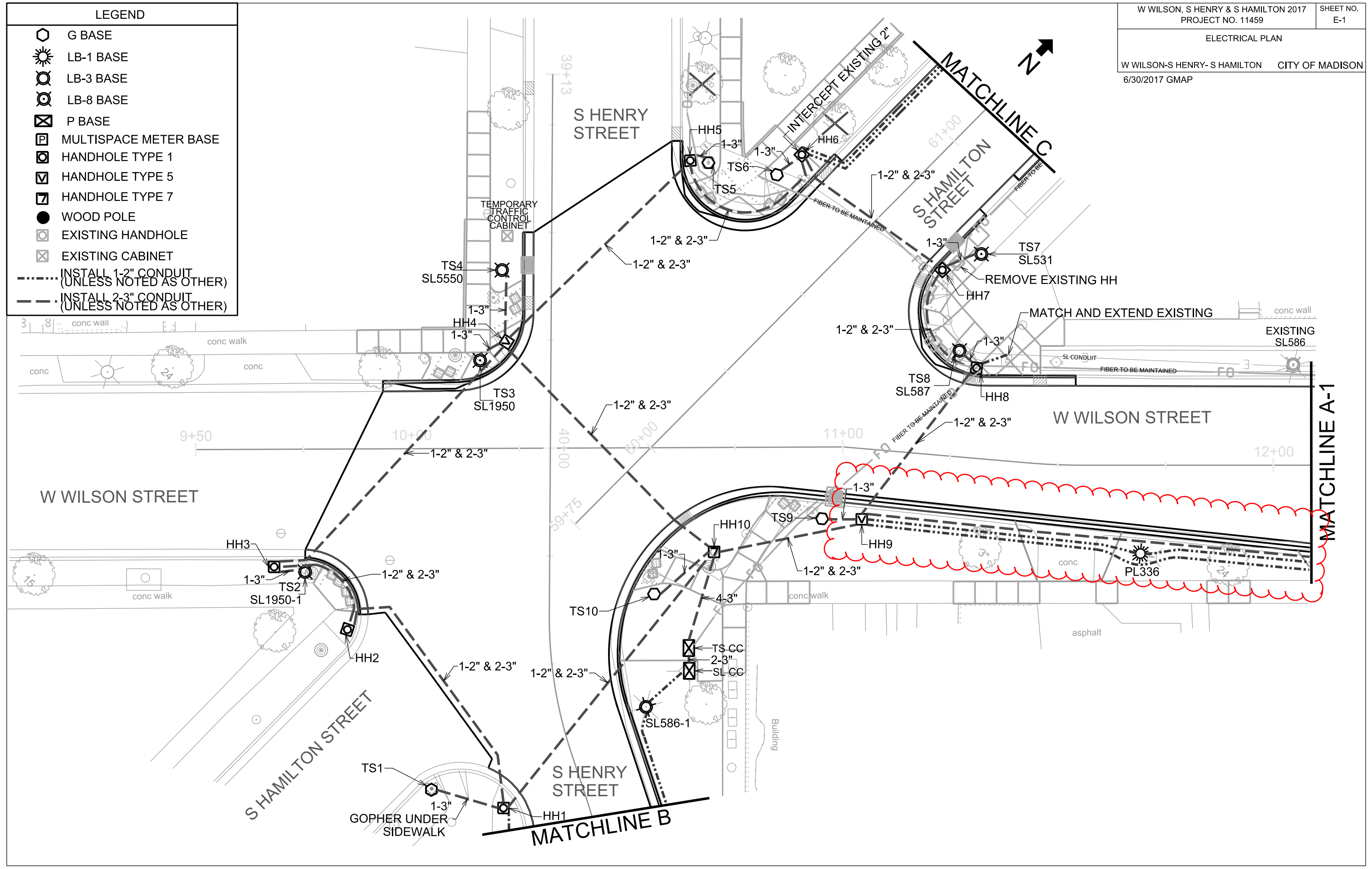
---

Robert F. Phillips, P.E., City Engineer

RFP:jmw

LEGEND	
	G BASE
	LB-1 BASE
	LB-3 BASE
	LB-8 BASE
	P BASE
	MULTISPACE METER BASE
	HANDHOLE TYPE 1
	HANDHOLE TYPE 5
	HANDHOLE TYPE 7
	WOOD POLE
	EXISTING HANDHOLE
	EXISTING CABINET
	INSTALL 1-2" CONDUIT (UNLESS NOTED AS OTHER)
	INSTALL 2-3" CONDUIT (UNLESS NOTED AS OTHER)

PLOT SCALE:  
 PLOT NAME:  
 REV. DATE:  
 ORIGINATOR: CITY OF MADISON, TRAFFIC ENG. DIV.



ELECTRICAL PLAN

W WILSON CITY OF MADISON  
 6/30/2017 GMAP



**LEGEND**

- G BASE
- LB-1 BASE
- LB-3 BASE
- LB-8 BASE
- P BASE
- MULTISPACE METER BASE
- HANDHOLE TYPE 1
- HANDHOLE TYPE 5
- HANDHOLE TYPE 7
- WOOD POLE
- EXISTING HANDHOLE
- EXISTING CABINET
- INSTALL 1-2" CONDUIT (UNLESS NOTED AS OTHER)
- INSTALL 2-3" CONDUIT (UNLESS NOTED AS OTHER)

MATCHLINE A-1

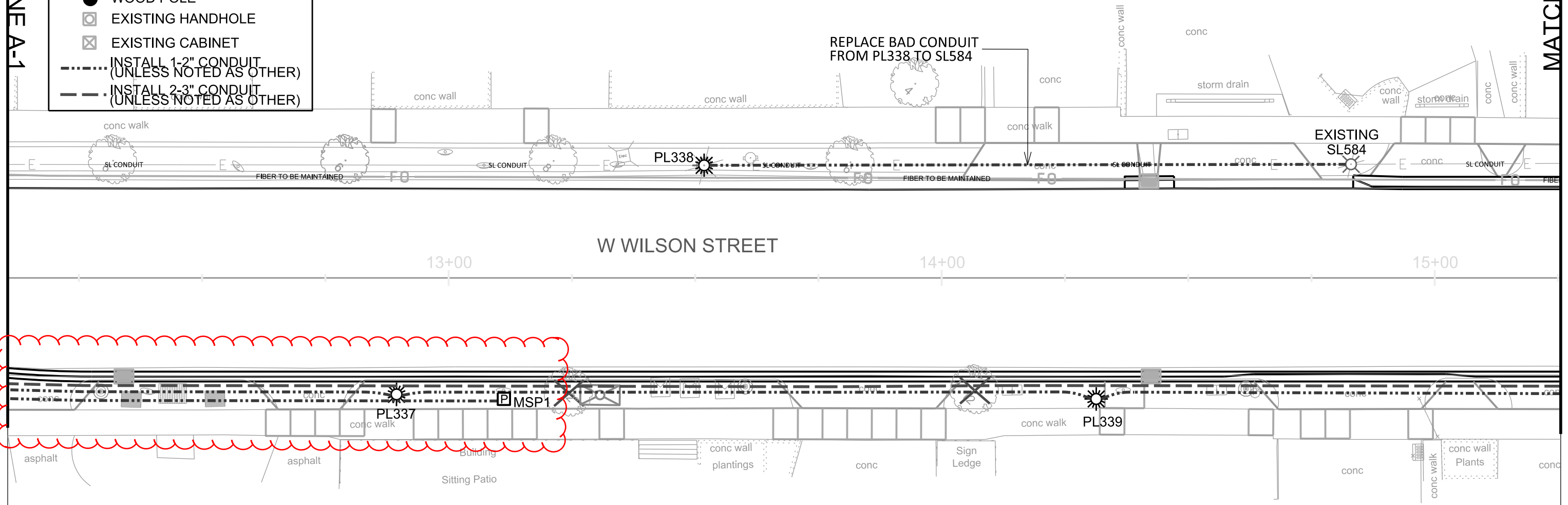
MATCHLINE A-2

PLOT SCALE:

PLOT NAME:

REV. DATE:

ORIGINATOR: CITY OF MADISON, TRAFFIC ENG. DIV.



ELECTRICAL PLAN

W WILSON - MLK BLVD CITY OF MADISON  
6/30/2017 GMAP

MARTIN LUTHER KING JR BLVD



LEGEND	
	G BASE
	LB-1 BASE
	LB-3 BASE
	LB-8 BASE
	P BASE
	MULTISPACE METER BASE
	HANDHOLE TYPE 1
	HANDHOLE TYPE 5
	HANDHOLE TYPE 7
	WOOD POLE
	EXISTING HANDHOLE
	EXISTING CABINET
	INSTALL 1-2" CONDUIT (UNLESS NOTED AS OTHER)
	INSTALL 2-3" CONDUIT (UNLESS NOTED AS OTHER)

MATCHLINE A-3

PLOT SCALE:

PLOT NAME:

REV. DATE:

ORIGINATOR: CITY OF MADISON, TRAFFIC ENG. DIV.

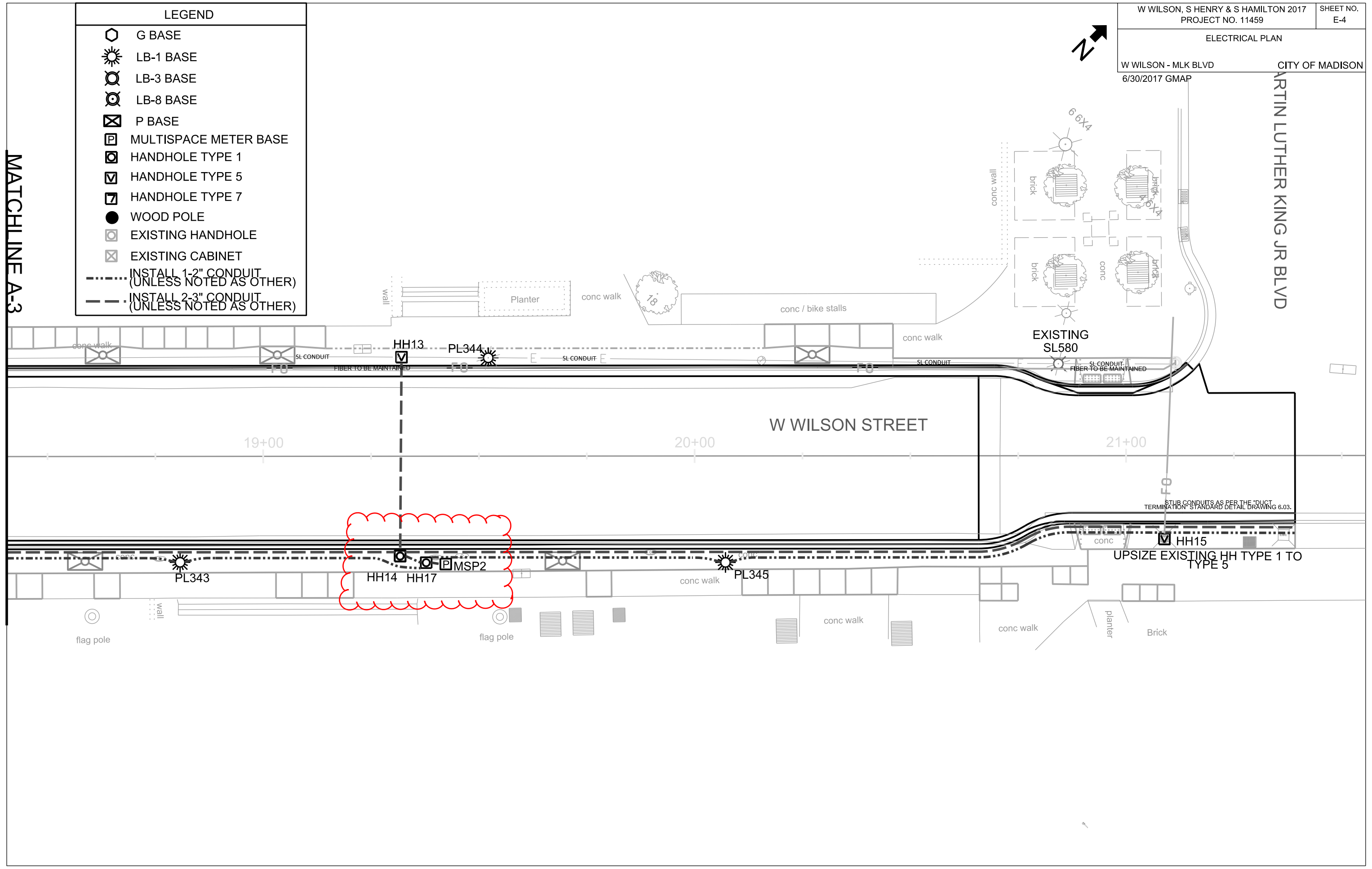
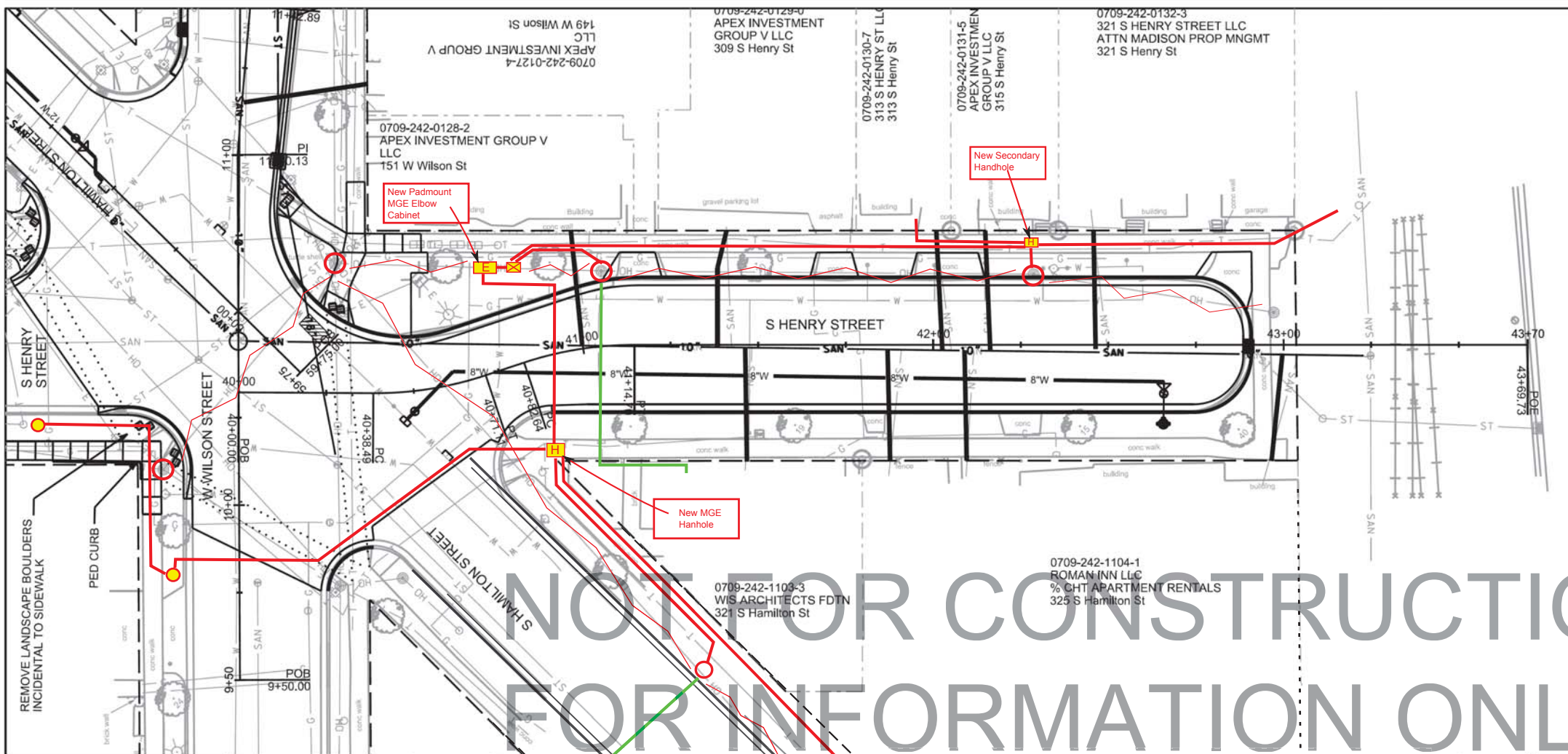


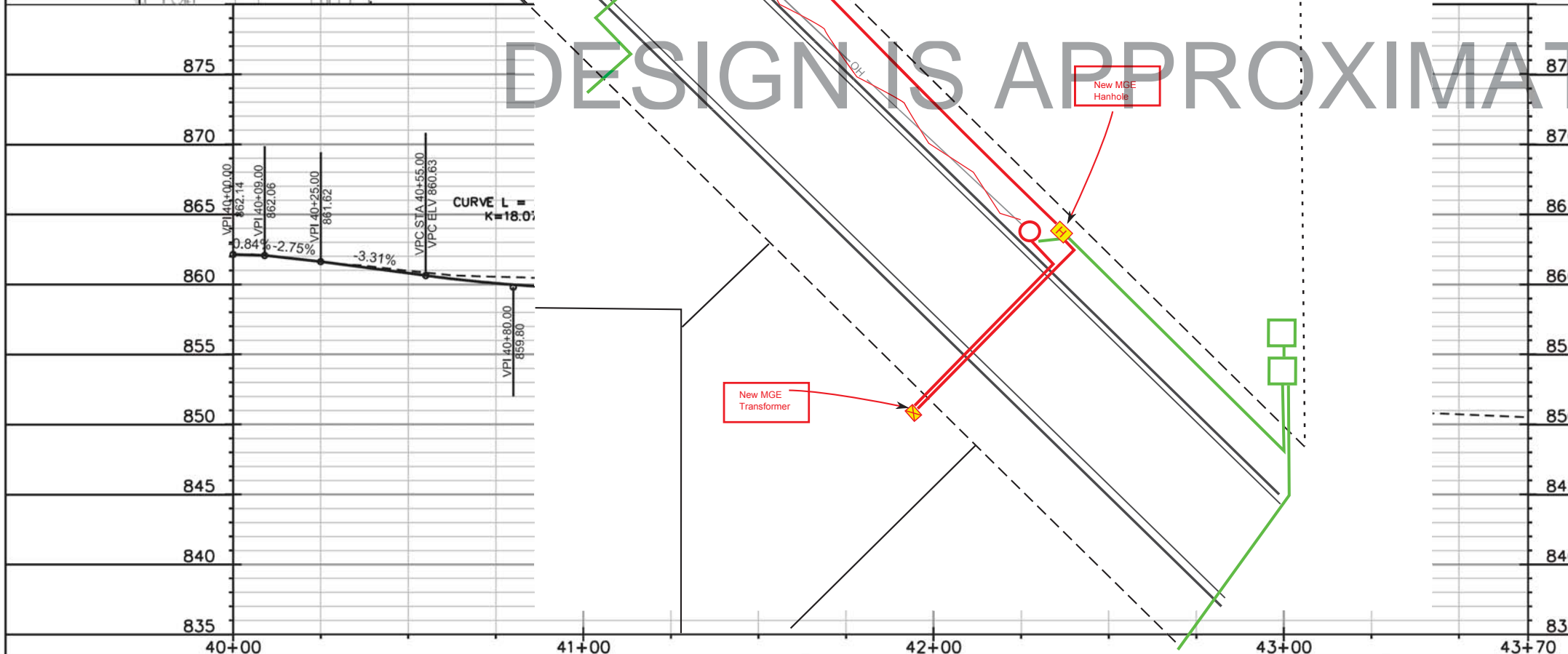


Exhibit A

	Proposed Trench
	Existing MGE Underground Conduit
	Existing MGE Padmounted Facilities
	New MGE Padmounted Facilities
	New MGE Padmounted Transformer
	New MGE poles
	Existing MGE poles
	Remove Existing MGE Overhead



NOT FOR CONSTRUCTION  
 FOR INFORMATION ONLY  
 DESIGN IS APPROXIMATE



PLOT SCALE:

PLOT NAME:

REV. DATE:

ORIGINATOR: CITY OF MADISON, STREETS DIVISION